

**FEBRUARY
2021**

MONTHLY TOURIST ARRIVALS REPORT



Sri Lanka Tourism Development Authority
www.sltda.gov.lk

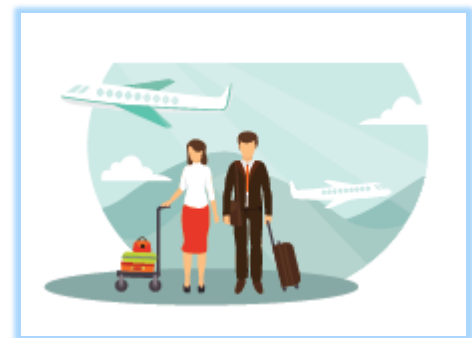


SUMMARY

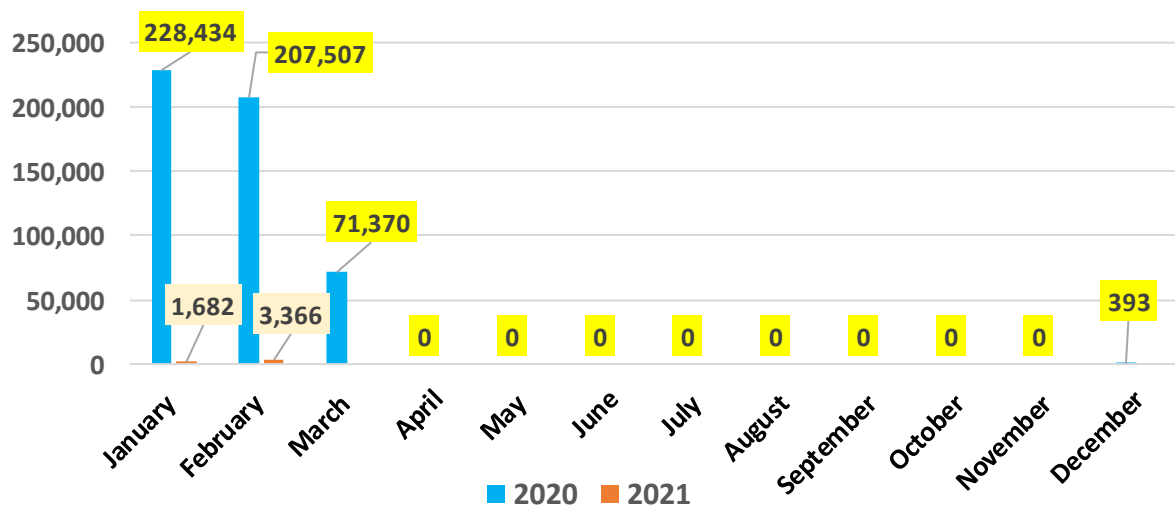
The total number of international tourist arrivals to Sri Lanka during February 2021 was 3,366. Sri Lanka reopened its borders on 21st January 2021, following a 10-month pandemic-induced closure since 18th March 2020. In comparison to February last year (2020), there was a decline of 98.4% when the arrivals were 207,507. As at 28th February 2021, 5,048 of tourists has visited Sri Lanka for this year. It is a decline of 98.8% over last year when 435,941 tourists had visited the country during the same period. The figures reflect the unprecedented health, social and economic crisis caused by the outbreak of the COVID-19 pandemic.

The largest source markets recorded for the month of February was Kazakhstan, followed by the Ukraine, and Germany.

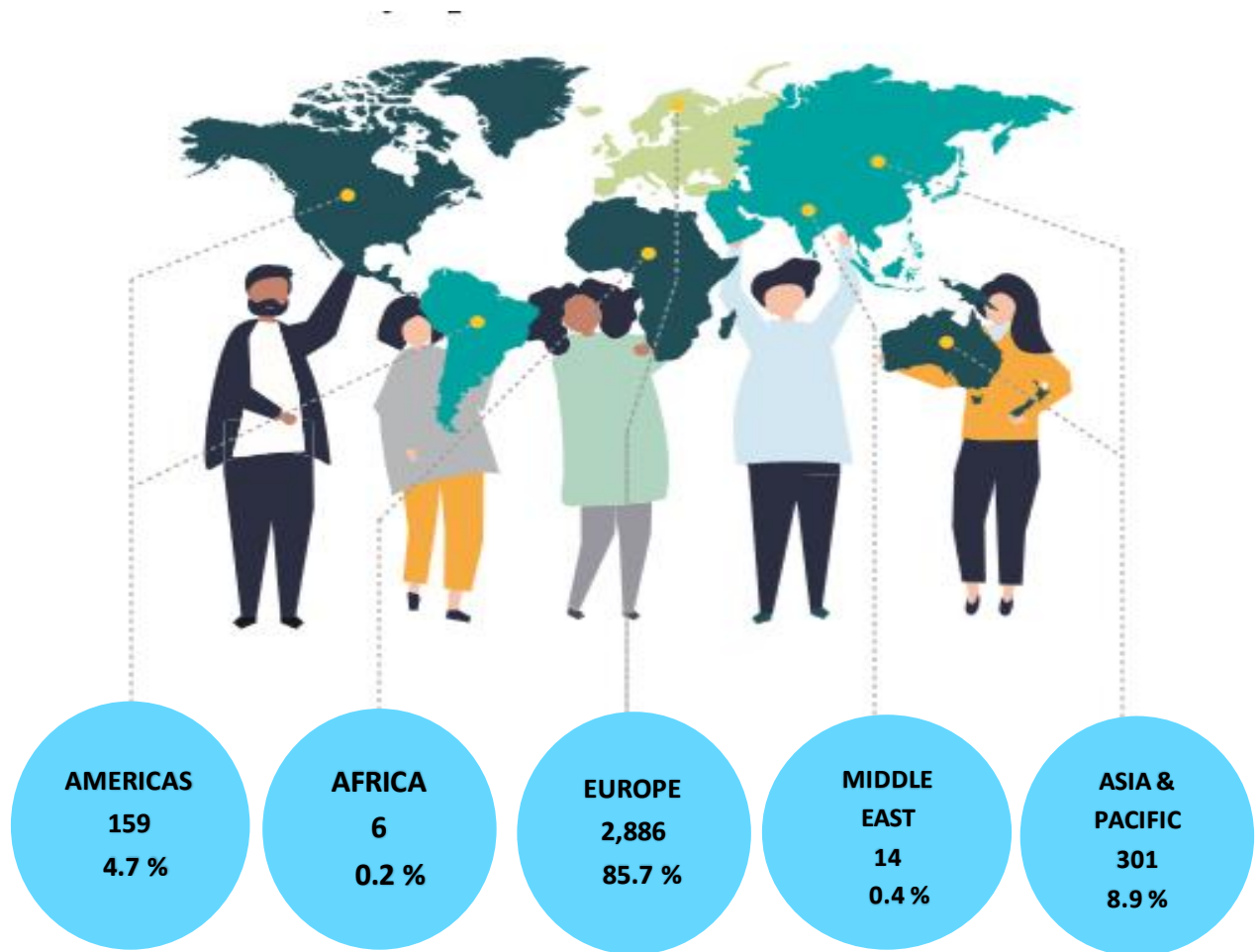
Month	2020	2021	% change 2021/20
January	228,434	1,682	(99.3)
February	207,507	3,366	(98.4)
March	71,370	-	-
April	0	-	-
May	0	-	-
June	0	-	-
July	0	-	-
August	0	-	-
September	0	-	-
October	0	-	-
November	0	-	-
December	393	-	-
Total (Jan ~ Feb)	435,941	5,048	(98.8)
TOTAL	507,704		



Tourist Arrivals – February
3,366



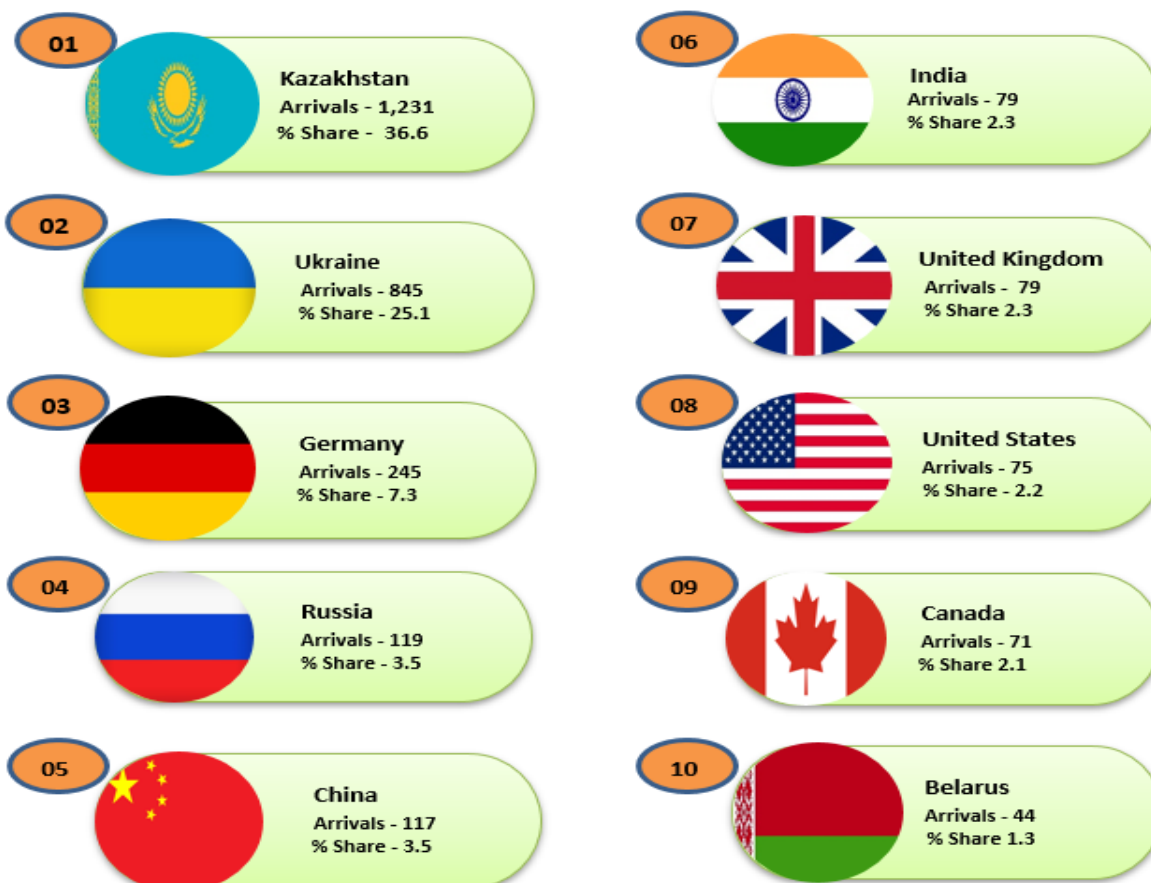
TOURIST ARRIVALS BY REGION AND PERCENTAGE SHARE FEBRUARY 2021



Europe became the largest source of tourist traffic to Sri Lanka with 85.7 % of the total traffic received in February 2021. Asia and Pacific accounted for 8.9% of the total traffic while Americas accounted for 4.7%. In comparison to February last year all regions have recorded a decline in arrivals. It is noteworthy that arrivals from Kazakhstan has recorded an increase of 82.9% in comparison to February 2020. Further, sub region wise, the lowest percentage change of 94.4% had been recorded from Central & Eastern Europe.

TOP TEN SOURCE MARKETS – FEBRUARY 2021

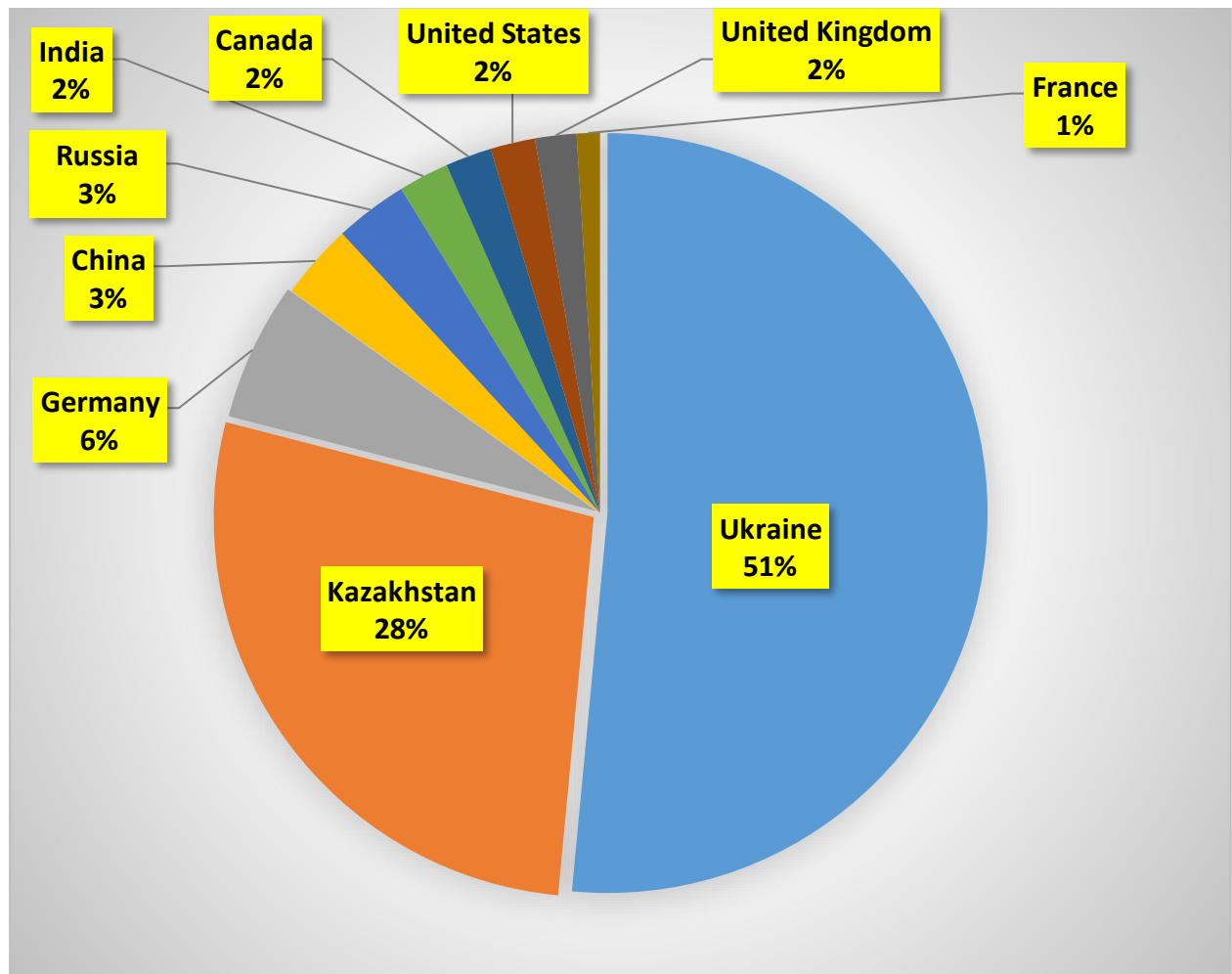
Kazakhstan, Ukraine, Germany, Russian Federation and China, were Sri Lanka's top five international tourist generating markets in the month of February this year. Kazakhstan was the largest source of tourist traffic to Sri Lanka with 36.6 % of the total traffic received in above period. Ukraine accounted for 25.1% of the total traffic; while Germany, Russian Federation and China accounted for 7.3% & 3.5% (both) respectively. The increased tourist arrivals from the Central and Eastern European countries could be partly owing to the pilot project carried out from 28th December 2020 by the Government of Sri Lanka. This has resulted in Kazakhstan and Ukraine moving in to the top positions of the main source markets.



Rank	Country of Residence	Tourist Arrivals February 2021			Tourist Arrivals February 2020
		By Air	By Sea	Total	
1	Kazakhstan	1,231	-	1,231	673
2	Ukraine	845	-	845	6,072
3	Germany	245	-	245	16,405
4	Russia	119	-	119	20,948
5	China	117	-	117	2,096
6	India	79	-	79	35,309
7	United Kingdom	79	-	79	26,348
8	United States	75	-	75	7,803
9	Canada	71	-	71	5,482
10	Belarus	44	-	44	1,101

TOP TEN SOURCE MARKETS – JANUARY TO FEBRUARY - 2021

Ukraine, Kazakhstan, Germany China and Russian Federation were Sri Lanka’s top five international tourist generating markets from January to February this year. Ukraine was the largest source of tourist traffic to Sri Lanka with 51% of the total traffic received from January to February 2021. Kazakhstan accounted for 28% of the total traffic; while Germany, China & Russian Federation accounted for 6%, 3%, 3% (both) respectively.



Rank	Country of Residence	Tourist Arrivals (Jan - Feb) 2021	Tourist Arrivals (Jan - Feb) 2020	% Change (Jan - Feb 2021 & Jan -Feb 2020)
1	Ukraine	2,305	14,621	(84.2)
2	Kazakhstan	1,232	1,855	(33.6)
3	Germany	264	27,899	(99.1)
4	China	144	24,459	(99.4)
5	Russian Federation	139	40,564	(99.7)
6	India	96	76,757	(99.9)
7	Canada	88	10,992	(99.2)
8	United States	85	15,297	(99.4)
9	United Kingdom	79	47,486	(99.8)
10	France	44	20,782	(99.8)

INTERNATIONAL TOURIST ARRIVALS BY COUNTRY OF RESIDENCE

	February 2021			Total Tourist Arrivals February 2020	% Change February (21/20)	Total Tourist Arrivals up to February 2021	Total Tourist Arrivals up to February 2020	% Change up to February 2021/20
	Tourist Arrivals							
	By Air	By Sea	Total					
AMERICAS	159	0	159	14,346	(98.9)	186	28,570	(99.3)
North America	149	0	149	13,466	(98.9)	176	26,608	(99.3)
Canada	71	0	71	5,482	(98.7)	88	10,992	(99.2)
Mexico	3	0	3	181	(98.3)	3	319	(99.1)
United States	75	0	75	7,803	(99.0)	85	15,297	(99.4)
						0		
Caribbean & Central America	4	0	4	124	(96.8)	4	204	(98.0)
Costa Rica	-	-	-	24	-	-	33	-
Jamaica	-	-	-	18	-	-	25	-
Others	4	0	4	82	(95.1)	4	146	(97.3)
						0		
South America	6	0	6	756	(99.2)	6	1,758	(99.7)
Argentina	-	-	-	140	-	-	364	-
Brazil	3	0	3	337	(99.1)	3	804	(99.6)
Chile	1	0	1	117	(99.1)	1	245	(99.6)
Colombia	2	0	2	72	(97.2)	2	160	(98.8)
Others	-	-	-	90	-	-	185	-
AFRICA	6	0	6	1,210	(99.5)	6	2,507	(99.8)
North Africa	2	0	2	263	(99.2)	2	569	(99.6)
Morocco	1	0	1	136	(99.3)	1	261	(99.6)
Sudan	1	0	1	40	(97.5)	1	107	(99.1)
Others	-	-	-	87	-	-	201	-
Sub-Saharan Africa	4	0	4	947	(99.6)	4	1,938	(99.8)
Kenya	-	-	-	50	-	-	95	-
Mauritius	1	0	1	44	(97.7)	1	151	(99.3)
Nigeria	-	-	-	13	-	-	25	-
South Africa	1	0	1	544	(99.8)	1	1,230	(99.9)
Others	2	0	2	296	(99.3)	2	437	(99.5)

	February 2021			Total Tourist Arrivals February 2020	% Change February (21/20)	Total Tourist Arrivals up to February 2021	Total Tourist Arrivals up to February 2020	% Change up to February 2021/20
	Tourist Arrivals							
	By Air	By Sea	Total					
ASIA & PACIFIC	301	0	301	64,654	(99.5)	381	156,855	(99.8)
North East Asia	131	0	131	6,539	(98.0)	159	34,720	(99.5)
China	117	0	117	2,096	(94.4)	144	24,459	(99.4)
Japan	9	0	9	3,015	(99.7)	10	5,932	(99.8)
South Korea	5	0	5	835	(99.4)	5	2,412	(99.8)
Taiwan	-	-	-	580	-	-	1,876	-
Others	-	-	-	13	-	-	41	-
South East Asia	29	0	29	6,315	(99.5)	41	11,899	(99.7)
Cambodia	-	-	-	152	-	-	298	-
Indonesia	5	0	5	515	(99.0)	6	916	(99.3)
Malaysia	3	0	3	1,400	(99.8)	2	2,799	(99.9)
Myanmar	4	0	4	214	(98.1)	2	404	(99.5)
Philippines	15	0	15	1,890	(99.2)	12	3,089	(99.6)
Singapore	-	-	-	878	-	1	2,092	-
Thailand	2	0	2	927	(99.8)	2	1,663	(99.9)
Vietnam	-	-	-	325	-	-	612	-
Others	-	-	-	14	-	-	26	-
Oceania	29	0	29	10,619	(99.7)	35	19,811	(99.8)
Australia	24	0	24	9,578	(99.7)	27	17,693	(99.8)
New Zealand	5	0	5	987	(99.5)	8	2,022	(99.6)
Others	-	-	-	54	-	-	96	-
South Asia	112	0	112	41,181	(99.7)	146	90,425	(99.8)
Afghanistan	-	-	-	64	-	-	129	-
Bangladesh	6	0	6	760	(99.2)	6	1,774	(99.7)
Bhutan	-	-	-	69	-	-	206	-
India	79	0	79	35,309	(99.8)	96	76,757	(99.9)
Iran	-	-	-	293	-	-	623	-
Maldives	13	0	13	2,960	(99.6)	30	7,224	(99.6)
Nepal	1	0	1	560	(99.8)	1	1,149	(99.9)
Pakistan	13	0	13	1,166	(98.9)	13	2,563	(99.5)

	February 2021			Total Tourist Arrivals February 2020	% Change February (21/20)	Total Tourist Arrivals up to February 2021	Total Tourist Arrivals up to February 2020	% Change up to February 2021/20
	Tourist Arrivals							
	By Air	By Sea	Total					
EUROPE	2,886	0	2,886	124,798	(97.7)	4,461	238,399	(98.1)
Northern Eur.	133	0	133	35,273	(99.6)	136	65,047	(99.8)
Denmark	11	0	11	2,223	(99.5)	11	4,399	(99.7)
Finland	2	0	2	1,037	(99.8)	2	2,023	(99.9)
Norway	14	0	14	1,304	(98.9)	14	2,683	(99.5)
Sweden	9	0	9	3,239	(99.7)	9	6,338	(99.9)
United Kingdom	79	0	79	26,348	(99.7)	79	47,486	(99.8)
Others	18	0	18	1,122	(98.4)	18	2,118	(99.2)
Western Eur.	367	0	367	38,124	(99.0)	416	67,994	(99.4)
Austria	19	0	19	2,024	(99.1)	24	3,698	(99.4)
Belgium	7	0	7	1,500	(99.5)	7	2,743	(99.7)
France	40	0	40	11,430	(99.7)	44	20,782	(99.8)
Germany	245	0	245	16,405	(98.5)	264	27,899	(99.1)
Netherlands	21	0	21	3,763	(99.4)	39	7,301	(99.5)
Switzerland	33	0	33	2,924	(98.9)	36	5,432	(99.3)
Others	2	0	2	78	(97.4)	2	139	(98.6)
Central / Eastern Europe	2,327	0	2,327	41,320	(94.4)	3,847	84,203	(95.4)
Belarus	44	0	44	1,101	(96.0)	44	2,200	(98.0)
Czech Republic	17	0	17	3,646	(99.5)	17	6,319	(99.7)
Estonia	3	0	3	651	(99.5)	3	1,045	(99.7)
Hungary	6	0	6	655	(99.1)	6	1,413	(99.6)
Kazakhstan	1,231	0	1,231	673	82.9	1232	1,855	(33.6)
Lithuania	5	0	5	397	(98.7)	5	911	(99.5)
Poland	11	0	11	4,693	(99.8)	11	10,270	(99.9)
Romania	2	0	2	693	(99.7)	2	1,478	(99.9)
Russian Federation	119	0	119	20,948	(99.4)	139	40,564	(99.7)
Slovakia	14	0	14	730	(98.1)	14	1,269	(98.9)
Ukraine	845	0	845	6,072	(86.1)	2305	14,621	(84.2)
Others	30	0	30	1,061	(97.2)	69	2,258	(96.9)

	February 2021			Total Tourist Arrivals February 2020	% Change February (21/20)	Total Tourist Arrivals up to February 2021	Total Tourist Arrivals up to February 2020	% Change up to February 2020
	Tourist Arrivals							
	By Air	By Sea	Total					
Southern / Mediterranean Europe	59	0	59	10,081	(99.4)	62	21,155	(99.7)
Greece	1	0	1	618	(99.8)	1	1,216	(99.9)
Italy	23	0	23	3,743	(99.4)	25	8,197	(99.7)
Portugal	4	0	4	850	(99.5)	4	1,418	(99.7)
Spain	18	0	18	1,380	(98.7)	18	2,889	(99.4)
Turkey	3	0	3	813	(99.6)	4	1,958	(99.8)
Israel	1	0	1	1,539	(99.9)	1	3,227	-
Others	9	0	9	1,138	(99.2)	9	2,250	(99.6)
MIDDLE EAST	14	0	14	2,499	(99.4)	14	9,610	(99.9)
Bahrain	-	-	-	131	-		535	-
Egypt	3	0	3	400	(99.3)	3	804	(99.6)
Iraq	-	-	-	52	-		123	-
Jordan	4	0	4	206	(98.1)	4	567	(99.3)
Kuwait	-	-	-	326	-		791	-
Lebanon	6	0	6	223	(97.3)	6	435	(98.6)
Oman	-	-	-	229	-		997	-
Qatar	1	0	1	53	(98.1)	1	122	(99.2)
Saudi Arabia	-	-	-	662	-		4,576	-
United Arab Emirates	-	-	-	123	-		322	-
Others	-	-	-	94	-		338	-
TOTAL	3,366	0	3,366	207,507	(98.4)	5,048	435,941	(98.8)

* All visitor arrival statistics in this report are from the Department of Immigration & Emigration.